

independIT Integrative Technologies GmbH
Bergstraße 6
D-86529 Schrobenhausen



schedulix

Installation Guide
Release 2.6.1

Dieter Stubler

Ronald Jeninga

March 3, 2015

Copyright © 2015 independIT GmbH

Legal notice

This work is copyright protected

Copyright © 2015 independIT Integrative Technologies GmbH

All rights reserved. No part of this work may be reproduced or transmitted in any form or by any means, electronically or mechanically, including photocopying, recording, or by any information storage or retrieval system, without the prior written permission of the copyright owner.

Contents

Table of contents	1
1 Requirements	1
Compile environment	1
schedulix Server	2
schedulix Client	2
Zope Application Server	3
2 Compiling the system	5
General preparation	5
Compile	5
3 Installation in a Linux environment	7
Installing the schedulix Server	7
Installing a schedulix Client	10
Jobserver Sample Installation	12
Scenario	12
Requirements	12
Installation	13
Installation with Postgres	15
Introduction	15
Installation	15
Installation with MySQL	16
Introduction	16
Installation	17
Installation with Ingres	18
Introduction	18
Installation	18
Installing the Zope server	20
Introduction	20
Installation	20

1 Requirements

Compile environment

The following software is required to create the executables from the source package that are needed on a Linux system:

- Oracle(Sun) Java 1.7 JDK or later
<http://www.oracle.com/technetwork/java/index.html>
Alternatively including an OpenJDK 1.7 or later
<http://openjdk.java.net>
- gcc, gcc-c++
<http://gcc.gnu.org>
- gnu make
<http://www.gnu.org/software/make>
- jflex (Version 1.4.x)
<http://jflex.de>
- jay
The jay executable is provided in the package. The original sources and executables can be found here.
<http://www.cs.rit.edu/~ats/projects/lp/doc/jay/package-summary.html>
Important: the jay executable requires 32-bit libraries. They will have to be installed additionally on 64-bit systems.
- Eclipse SWT
The package includes several examples for which SWT has to be installed. To make sure that the compile does not crash and the examples, function properly requires an Eclipse SWT.
<http://www.eclipse.org/swt>
- Java Native Access (JNA)
In order to avoid the use of a JNI library we use the JNA library from version 2.6 and later.
<https://github.com/twall/jna>

In many cases, the required software packages can be easily installed using a Package Manager such as yum, rpm or dpkg.

schedulix Server

The following software is required to install the schedulix server:

- A for this architecture suitable schedulix-2.6.1.tgz
- Oracle(Sun) Java 1.7 SE JRE
<http://www.oracle.com/technetwork/java/index.html>
Alternatively an OpenJDK 1.7 or later
<http://openjdk.java.net>
- One of the following RDBMS systems with the corresponding JDBC interface:
 - PostgreSQL
<http://www.postgresql.org>
JDBC for PostgreSQL:
<http://jdbc.postgresql.org>
 - MySQL
<http://www.mysql.com>
MySQL (Connector/J) JDBC Driver
<http://www.mysql.com>
 - Ingres
<http://www.ingres.com>
- Eclipse SWT
The package includes several examples for which SWT has to be installed.
<http://www.eclipse.org/swt> If you don't want to install the examples, the SWT package is not required.

schedulix Client

The following software is required to install a schedulix client:

- A for this architecture suitable schedulix-2.6.tgz
- Oracle(Sun) Java 1.7 SE JRE
<http://www.oracle.com/technetwork/java/index.html>
Alternatively an OpenJDK 1.7 or later
<http://openjdk.java.net>
- Eclipse SWT
The package includes several examples for which SWT has to be installed.
<http://www.eclipse.org/swt> If you don't want to execute the examples on this client, the SWT package is not required.

Zope Application Server

- Java Native Access (JNA)
In order to avoid the use of a JNI library we use the JNA library from version 2.6 and later. This library is only required for the Jobserver.
<https://github.com/twall/jna>

Zope Application Server

The web front end is provided by the Zope Application Server. The following software is required to install the Zope server:

- Python 2.7
<http://www.python.org>
- Python development package (python-devel or python-dev)
<http://www.python.org>
- python-setuptools
<http://pypi.python.org>

Zope Application Server

2 Compiling the system

General preparation

Sensitive software should be installed under a separate account. This simplifies the administration and protects against abuse. In this guide it is assumed that the conversion and installation take place using the account `schedulix`. The home directory is assumed to be `/home/schedulix`. These are naturally just suggestions. It is not technically necessary to use them, although the guide will have to be interpreted accordingly if different parameters are being used.

How to create a user is described in the installation chapter on page 7.

Compile

To successfully translate the system after the required packages have been installed, some environment variables have to be set before "make" can do the actual work. Because no special privileges are required either for the conversion or the installation these are done under the user `schedulix`.

1. Download of the `schedulix` source distribution from github
All files needed for compilation and installing the system are available in github and can be retrieved using the following command:

```
cd $HOME
git clone https://github.com/schedulix/schedulix.git \
    -b v2.6.1 schedulix-2.6.1
```

Afterwards all the files of the `schedulix` source distribution will be stored in the subdirectory

```
$HOME/schedulix-2.6.1
```

2. Set the environment variables

You now have to set some environment variables. The following commands are from an installation using a CentOS (<http://www.centos.org>) Linux distribution. In many cases the commands can be taken over as given here, but they are dependent upon the specific Linux distribution and the installed software.

Compile

```
export SDMSHOME=/home/schedulix/schedulix-2.6.1
export CLASSPATH=$CLASSPATH:/usr/share/java/jflex.jar
export JAVAHOME=/usr/lib/jvm/java-1.7.0-openjdk-1.7.0.0
export SWTJAR=/usr/lib/java/swt.jar
export JNAJAR=/usr/share/java/jna.jar
```

It is advisable to add these settings to `.bashrc` at least until the compilation of the system has been completed.

3. make

All that remains to be done now is the actual compilation of the system.

```
cd ~/schedulix-2.6.1/src
make
```

In case of a repeated compilation attempt it is advisable to enter `make new` instead of `make`.

In the last operation a jar file is created and saved under `~/schedulix/lib`.

4. Create `~/schedulix-2.6.1.tgz`

```
cd $HOME
tar czf schedulix-2.6.tgz schedulix-2.6.1
```

3 Installation in a Linux environment

Installing the schedulix Server

The installation of the schedulix Scheduling Server is uncomplicated and only requires a few simple actions which are explained in the following.

Where (example) commands are shown, the prompt is usually indicated with `$`. These commands are then executed under the `schedulix` account, which needs to be created. In some cases, the privileged `root` account is required. This is indicated by a `#` as prompt.

1. Create the user `schedulix`

It is not necessary to name the user `schedulix`. This means that the name can also be modified for any convention. In this document it is assumed that the user is called `schedulix`.

Under the Ubuntu distribution of Linux, a user can be created as follows:

```
# useradd -d /home/schedulix -m -s /bin/bash -U schedulix
# passwd schedulix
```

All the following operations are executed under the user `schedulix` except where a different user is explicitly stated.

2. Download and install a database management system supported by schedulix.

schedulix for Linux currently supports the following systems:

- Postgres (page 15)
- MySQL (page 16)
- Ingres (page 18)

Reference is made to the appropriate sections regarding the installation of the chosen database system as well as how to modify the configuration of the schedulix Enterprise Scheduling System.

3. Unpack the software

Unpack the tar archive in the `schedulix` home directory. For instance:

```
$ tar xvzf schedulix-2.6.1.tgz
```

Installing the schedulix Server

Create a symbolic link:

```
$ ln -s schedulix-2.6.1 schedulix
```

4. Create the configuration

a) User environment

The following variables have to be set to be able to work with the schedulix system:

```
BICSUITEHOME=/home/schedulix/schedulix
BICSUITECONFIG=/home/schedulix/etc
PATH=$BICSUITEHOME/bin:$PATH
SWTJAR=/usr/lib/java/swt.jar
```

It has proved to be good practice to save the system configuration in a different folder to the installation directory. This will make it substantially easier to upgrade the system later. Since the variables of all the systems users have to be set, it may be sensible to write the assignments (and exports) to a separate file and then to source this in `.profile` or `.bashrc`.

b) Software environment

Several templates for the configuration files that should be used as a basis for the system configuration can be found under `$BICSUITEHOME/etc`. These have to be copied without the `".template"` extension to the directory `$BICSUITECONFIG`.

For instance:

```
$ cd $BICSUITEHOME/etc; for fff in *.template; do
> TRG=`basename $fff .template`;
> cp $fff $BICSUITECONFIG/$TRG;
> done
```

Afterwards, the files obviously have to be modified to accommodate the environment.

The file `bicsuite.conf` configures some default settings and does not usually have to be modified. However, it may be worth considering running the system logging in a different folder to the installation directory. In this case it is only necessary to change the variable `BICSUITELOGDIR` accordingly. The directory set in `BICSUITELOGDIR` must exist.

The file `java.conf` describes the Java environment that is to be used. In particular, the path to the JDBC driver must be entered. The memory configuration of the server is also regulated here. Even in large-scale environments it is usually only necessary to adapt the variable `BICSUITEMEM`.

Installing the schedulix Server

The file `server.conf` contains the server configuration. The settings for connecting the schedulix Scheduling Server to its RDBMS repository have to be modified. More details about this can be found in the respective chapter on the RDBMS that is being used.

In this file it is also necessary to change the `hostname` property to the servers hostname or IP address.

The file `jobserver.conf` is not required here, but serves as a template for the job server configuration.

5. Set up the database

Follow the instructions for setting up the database system dependent upon which system you want to use.

For

- Ingres, see page 18,
- MySQL, see page 16, and for
- PostgreSQL, see page 15.

6. Start the server

The installation is now more or less complete. You just have to start the server and load the examples as required.

The server can be started with

```
$ server-start
```

7. Create the file `.sdmshrc`

The file `.sdmshrc`, if present, is read by all the schedulix command line tools for populating the command line parameters. In the following it is assumed that this file exists and that the correct values have been set for the users, password, host and port. The file `.sdmshrc` is created in the Linux user's home directory.

Here is an example of the contents:

```
$ cat ~/.sdmshrc
User=SYSTEM
Password=G0H0ME
Host=localhost
Port=2506
Timeout=0
```

Important: Since the file contains the data for accessing the Scheduling Server, the file rights should be set so that only its owner can read the file.

Installing a schedulix Client

```
$ chmod 600 ~/.sdmshrc
$ ls -lG ~/.sdmshrc
-rw----- 1 schedulix 73 2011-11-09 09:28 /home/schedulix/.sdmshrc
```

8. Install the convenience package

The convenience package installs a commonly used configuration for an exit state model.

```
$ sdmsh < $BICSUITEHOME/install/convenience.sdms
```

9. Install the examples (optionally)

The installation routine for the examples comprises two parts. First of all, three so-called job servers that are required for the subsequent workflow definitions are created. Sample workflow definitions are then loaded onto the server.

a) Create the job servers

It just takes one script to create the job servers:

```
$ cd $BICSUITEHOME/install
$ setup_example_jobserver.sh
```

b) Load the workflow definitions

The following commands are entered to load the workflow definitions:

```
$ cd $BICSUITEHOME/install
$ sdmsh < setup_examples.sdms
```

Because the examples assume that the job servers have already been created, the above sequence is mandatory.

Installing a schedulix Client

The installation of a schedulix scheduling client is easy and requires only a few simple actions which are explained in the following.

Where (example) commands are shown, the prompt is usually indicated with `$`. These commands are then executed under the `schedulix` account, which needs to be created. In some cases, the privileged `root` account is required. This is indicated by a `#` as prompt.

1. Creating the user `schedulix`

It is not necessary to name the user `schedulix`. This means that the name can also be modified for any convention. In this document it is assumed that the user is called `schedulix`.

Under the Ubuntu distribution of Linux, a user can be created as follows:

Installing a schedulix Client

```
# useradd -d /home/schedulix -m -s /bin/bash -U schedulix
# passwd schedulix
```

All the following operations are executed under the user `schedulix` except where a different user is explicitly stated.

2. Unpack the software

Unpack the tar archive in the `schedulix` home directory. For instance:

```
$ tar xvzf schedulix-2.6.1.tgz
```

Create a symbolic link:

```
$ ln -s schedulix-2.6.1 schedulix
```

3. Create the configuration

a) User environment

The following variables have to be set to be able to work with the `schedulix` system:

```
BICSUITEHOME=/home/schedulix/schedulix
BICSUITECONFIG=/home/schedulix/etc
PATH=$BICSUITEHOME/bin:$PATH
SWTJAR=/usr/lib/java/swt.jar
JNAJAR=/usr/share/java/jna.jar
```

It has proved to be good practice to save the system configuration in a different folder to the installation directory. This will make it substantially easier to upgrade the system later. Since the variables of all the systems users have to be set, it may be sensible to write the assignments (and exports) to a separate file and then to source this in `.profile` or `.bashrc`.

b) Software environment

Several templates for the configuration files that should be used as a basis for the system configuration can be found under `$BICSUITEHOME/etc`. For a client installation we need the files `bicsuite.conf` and `java.conf`. These have to be copied without the `".template"` extension to the directory `$BICSUITECONFIG`.

```
$ cp $BICSUITEHOME/etc/bicsuite.conf.template \
    $BICSUITECONFIG/bicsuite.conf
$ cp $BICSUITEHOME/etc/java.conf.template \
    $BICSUITECONFIG/java.conf
```

Jobserver Sample Installation

The file `bicsuite.conf` configures some default settings and does not usually have to be modified.

The file `java.conf` describes the Java environment that is to be used and usually does not require any changes.

4. Create the file `.sdmshrc`

The file `.sdmshrc`, if present, is read by all the `schedulix` command line tools for populating the command line parameters. In the following it is assumed that this file exists and that the correct values have been set for the users, password, host and port. The file `.sdmshrc` is created in the Linux user's home directory.

Here is an example of the contents:

```
$ cat ~/.sdmshrc
User=SYSTEM
Password=GOHOME
Host=localhost
Port=2506
Timeout=0
```

Important: Since the file contains the data for accessing the Scheduling Server, the file rights should be set so that only its owner can read the file.

```
$ chmod 600 ~/.sdmshrc
$ ls -lG ~/.sdmshrc
-rw----- 1 schedulix 73 2011-11-09 09:28 /home/schedulix/.sdmshrc
```

Jobserver Sample Installation

In the following a sample installation of a `schedulix` jobserver will be shown.

Scenario

On the machine `machine_42` a jobserver shall execute processes as user `arthur`. The HOME directory of the user is `/home/arthur`.

The `schedulix` server is installed on the machine `scheduling_server` and is listening on port 2506. The system password is `GOHOME`.

Requirements

On the machine `machine_42`, a `schedulix` client was installed in the HOME directory `/home/schedulix`.

The user `arthur` has the following access privileges on the client installation files:

Jobserver Sample Installation

- Read access on the files `java.conf` and `bicsuite.conf` in `$BICSUITECONFIG` and all files under `/home/schedulix/lib`
- Read and execute privileges on all files in `/home/schedulix/bin`

Installation

To enable a jobserver to connect to the schedulix scheduling server, the jobserver has to be configured within schedulix scheduling server. In the following we execute the necessary steps using the `sdmsh` command line utility. Alternatively this could also be done using the Web GUI.

1. Login as user `arthur` into the machine `machine_42`
2. Setting of the shell environment variables (`.bashrc`).

```
export BICSUITEHOME=/home/schedulix/schedulix
export BICSUITECONFIG=/home/schedulix/etc
export PATH=$BICSUITEHOME/bin:$PATH
```

3. Testing the environment

```
sdmsh --host localhost --port 2506 --user SYSTEM --pass G0H0ME
```

A `SDMS>` prompt should appear (use `'exit'` to close `sdmsh`).

4. Create directories

```
cd $HOME
mkdir etc
mkdir taskfiles
mkdir work
mkdir log
```

5. Create a Scope for machine `machine_42` using `sdmsh`

```
SDMS> CREATE OR ALTER SCOPE GLOBAL.'MACHINE_42'
WITH
CONFIG = (
  'JOBEXECUTOR' = '/home/bicsuite/bicsuite/bin/jobserver',
  'HTTPHOST' = 'machine_42'
);
```


Jobserver Sample Installation

All directory paths must be full qualified. The use of shell environment variables is not supported.

6. Create a job server using sdmsh

```
SDMS> CREATE OR ALTER JOB SERVER GLOBAL.'MACHINE_42'.'ARTHUR'
WITH
  PASSWORD = 'dent',
  NODE = 'machine_42',
  CONFIG = (
    'JOBFILEPREFIX' = '/home/arthur/taskfiles/',
    'DEFAULTWORKDIR' = '/home/arthur/work',
    'HTTPPORT' = '8905',
    'NAME_PATTERN_LOGFILES' = '/home/arthur/work/.*\\.log'
  );
```

The HTTPPORT is necessary for the display of job logs and can be selected freely but must be unique for all jobserver on the same machine. All directory paths must be full qualified. The use of shell environment variables is not supported.

7. Create the Named Resource for the jobserver using sdmsh

```
SDMS> CREATE OR ALTER NAMED RESOURCE RESOURCE.'JOBSERVERS'
WITH USAGE = CATEGORY;
SDMS> CREATE NAMED RESOURCE RESOURCE.'JOBSERVERS'.'ARTHUR@MACHINE_42'
WITH USAGE = STATIC;
```

8. Create an Environment for the job server using sdmsh

```
SDMS> CREATE ENVIRONMENT 'ARTHUR@MACHINE_42'
WITH RESOURCE = (RESOURCE.'JOBSERVERS'.'ARTHUR@MACHINE_42');
```

9. Create the Resource in the job server using sdmsh

```
SDMS> CREATE RESOURCE RESOURCE.'JOBSERVERS'.'ARTHUR@MACHINE_42'
IN GLOBAL.'MACHINE_42'.'ARTHUR' WITH ONLINE;
```

10. Create the configuration file `$HOME/etc/jobserver.conf` for the jobserver containing the following:

```
RepoHost= scheduling_server
RepoPort= 2506
RepoUser= "GLOBAL.'MACHINE_42'.'ARTHUR' "
RepoPass= dent
```

Installation with Postgres

11. Start the jobserver

```
jobserver-run $HOME/etc/jobserver.conf $HOME/log/jobserver.out
```

If the jobserver should start automatically at boot time, the system administrator has to configure this accordingly.

Installation with Postgres

Introduction

This guide does not claim to precisely describe the installation of the database system. Details about this can be found in the Postgres documentation. Normally, though, this guide should be adequate for performing a "standard" installation.

Installation

1. Download and install the latest version of Postgres

A Postgres package is normally provided for every Linux distribution. This package, as well as a package for the JDBC driver for Postgres, should usually be easy to install.

2. Configure the file `pg_hba.conf`

To enable the schedulix Scheduling Server to identify itself to PostgreSQL with a user and password, the following line has to be added to the Postgres configuration file `pg_hba.conf`. This file is usually found under `/var/lib/pgsql/<version>/data:`

```
host all all 127.0.0.1/32 md5
```

PostgreSQL then has to be restarted.

3. Create the Postgres user schedulix

Log on as the Postgres user and run the command `createuser` as shown in the example (version 8):

```
$ createuser -P schedulix
Enter password for new role:
Enter it again:
Shall the new role be a superuser? (y/n): n
Shall the new role be allowed to create databases? (y/n): y
Shall the new role be allowed to create more new roles? (y/n): n
```

or, in the case of version 9:

Installation with MySQL

```
$ createuser -P -d schedulix
```

The entered password will be required again later.

4. Create the repository database

When you are logged on as the user `schedulix`, create the database for the repository as shown in the following example:

```
$ createdb schedulixdb
```

5. Create and initialise the database tables

To create the required database schema, switch to the `schedulix sql` directory and call the Postgres utility `psql` as shown in the following example:

```
$ cd $BICSUITEHOME/sql
$ psql -f pg/install.sql schedulixdb
```

6. Configure the database connection in the schedulix Server configuration file

`$BICSUITECONFIG/server.conf`

Change the following properties as shown here:

```
DbPasswd=schedulix password
DbUrl=jdbc:postgresql:schedulixdb
DbUser=schedulix
JdbcDriver=org.postgresql.Driver
```

The `DbUrl` is to a certain degree dependent upon which version of PostgreSQL is installed. Under Version 9.2 this is

```
DbUrl=jdbc:postgresql:schedulixdb
```

7. Configure the schedulix Java Class Path for the Postgres JDBC

Now all you have to do is to append the path to the Postgres JDBC to `CLASSPATH` in the configuration file `$BICSUITECONFIG/java.conf`.

For instance:

```
BICSUITECLASSPATH=$BICSUITEJAR:/usr/share/java/postgresql-jdbc3-8.4.jar
```

Installation with MySQL

Introduction

This guide does not claim to precisely describe the installation of the database system. Details about this can be found in the MySQL documentation. Normally, though, this guide should be adequate for performing a "standard" installation.

Installation

1. Download and install the latest version of MySQL.

Ready-to-use MySQL packages are available for most Linux distributions. These can be simply installed using the appropriate tools.

During this installation, you will be prompted to enter a password for the MySQL root user (not to be confused with the Linux root user). This password is required again in the next step.

Because schedulix sets up a JDBC connection to access the database, the MySQL JDBC driver has to be installed as well.

2. Create the MySQL user schedulix and the database schedulixdb

Start the Utility `mysql` utility and log on as the MySQL root user to create the user schedulix and the database schedulixdb:

```
$ mysql --user=root --password=mysql-root-password
```

```
Welcome to the MySQL monitor.  Commands end with ; or \g.
Your MySQL connection id is 41
Server version: 5.1.54-lubuntu4 (Ubuntu)
```

```
Copyright (c) 2000, 2010, Oracle and/or its affiliates. All rights reserved.
This software comes with ABSOLUTELY NO WARRANTY. This is free software,
and you are welcome to modify and redistribute it under the GPL v2 license
```

```
Type 'help;' or '\h' for help. Type '\c' to clear the current input statement.
```

```
mysql> create user schedulix identified by 'schedulix_password';
Query OK, 0 rows affected (0.01 sec)
```

```
mysql> create database schedulixdb;
Query OK, 1 row affected (0.00 sec)
```

```
mysql> grant all on schedulixdb.* to schedulix;
Query OK, 0 rows affected (0.00 sec)
```

```
mysql> quit
Bye
```

3. Create and initialise the database tables

Run the following commands:

```
$ cd $BICSUITEHOME/sql
$ mysql --user=schedulix --password=schedulix_password
  --database=schedulixdb --execute="source mysql/install.sql"
```

4. Configure the database connection in the `$BICSUITECONFIG/server.conf` configuration file

Change the following properties as shown here:

Installation with Ingres

```
DbPasswd=schedulix_password
DbUrl=jdbc:mysql:///schedulixdb
DbUser=schedulix
JdbcDriver=com.mysql.jdbc.Driver
```

5. Configure the schedulix Java Class Path for the MySQL JDBC

Now all you have to do is to append the path to the MySQL JDBC to CLASSPATH in the configuration file `$BICSUITECONFIG/java.conf`.

For instance

```
BICSUITECLASSPATH=$BICSUITEJAR:/usr/share/java/mysql-connector-java.jar
```

Installation with Ingres

Introduction

This guide does not claim to precisely describe the installation of the database system. Details about this can be found in the Ingres documentation. Normally, though, this guide should be adequate for performing a "standard" installation.

Installation

1. Install Ingres

We assume that the Ingres system will be installed under the user `ingres`. The installation identifier is taken here as being `II`, which is the default value.

2. Create the user schedulix

There are two ways of registering the user `schedulix` in the Ingres system. The first method involves creating the user with the help of the tool `accessdb`. This method is not explained here any further.

The second method is to create the user using SQL commands. To do this, start the SQL Terminal Monitor as the user `ingres`:

```
$ su - ingres
Password:
ingres@cheetah:~$ sql iidbdb
INGRES TERMINAL MONITOR Copyright 2008 Ingres Corporation
Ingres Linux Version II 9.2.1 (a64.lnx/103)NPTL login
Mon Jun 13 10:05:19 2011

continue
* create user schedulix with privileges = (createdb);
* \g
Executing . . .
```

Installation with Ingres

```
continue
* commit;\g
Executing . . .

continue
* \q
Ingres Version II 9.2.1 (a64.lnx/103)NPTL logout
Mon Jun 13 10:07:58 2011
ingres@cheetah:~$
```

3. Create the repository database schedulixdb

```
$ $II_SYSTEM/ingres/bin/createdb schedulixdb
Creating database 'schedulixdb' . . .

    Creating DBMS System Catalogs . . .
    Modifying DBMS System Catalogs . . .
    Creating Standard Catalog Interface . . .
    Creating Front-end System Catalogs . . .

Creation of database 'schedulixdb' completed successfully.
```

4. Create and initialise the database tables

Run the following commands to create the required tables:

```
$ cd $BICSUITEHOME/sql
$ sql schedulixdb < ing\install.sql
```

5. Configure the database connection in the schedulix Server configuration file

`$BICSUITECONFIG/server.conf`

Change the following properties as shown here:

```
DbPasswd=<schedulix OS password>
DbUrl=jdbc:ingres://localhost:II7/schedulixdb;
DbUser=schedulix
JdbcDriver=com.ingres.jdbc.IngresDriver
```

6. Configure the schedulix Java Class Path for the Ingres JDBC

Now all you have to do is to append the path to the Ingres JDBC to CLASSPATH in the configuration file `$BICSUITECONFIG/java.conf`.

For instance:

```
BICSUITECLASSPATH=$BICSUITEJAR:$II_SYSTEM/ingres/lib/iijdbc.jar
```

Installing the Zope server

Introduction

A Zope Application Server has to be installed before you can use the schedulix interface.

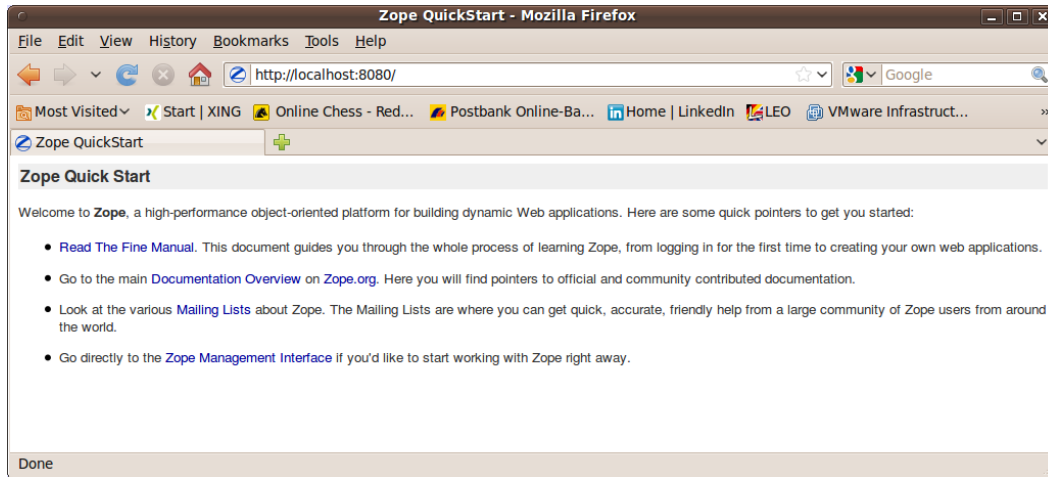


Figure 3.1: Zope Quick Start page

Installation

1. Install virtualenv

```
$ easy_install virtualenv
```

2. Create a virtual Python environment for the Zope installation

```
$ mkdir $HOME/software  
$ cd $HOME/software  
$ virtualenv --no-site-packages Zope
```

3. Install the Zope2 software

```
$ cd $HOME/software/Zope  
$ bin/easy_install -i http://download.zope.org/Zope2/index/2.13.6 Zope2
```

4. Create a Zope instance for schedulix user interface

Installing the Zope server

```
$ cd $HOME/software/Zope
$ bin/mkzopeinstance -d $HOME/schedulixweb -u sdmsadm:sdmsadm_password
```

You can use any password of your choice. This will be required again later again. The username must be `sdmsadm` though.

The Zope server is started briefly for testing:

```
$ $HOME/schedulixweb/bin/zopectl start
```

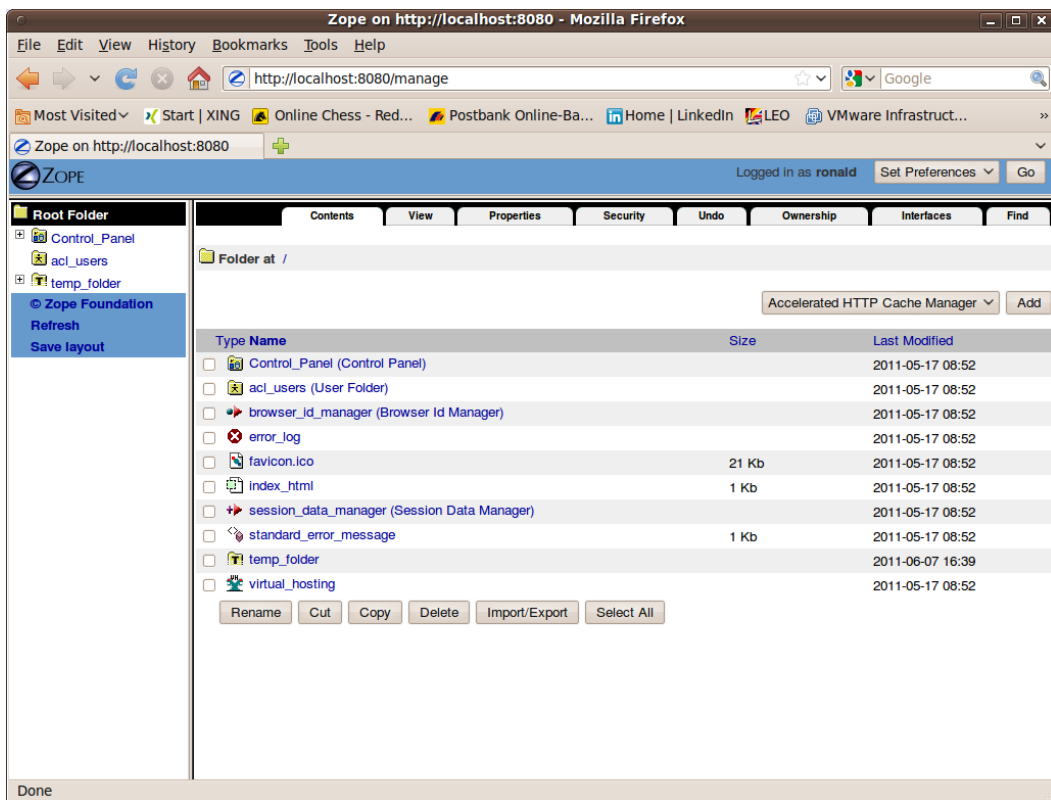


Figure 3.2: Zope Management screen

In the web browser, the URL

```
http://localhost:8080
```

should now be displayed on the Zope QuickStart page as in Figure 3.1.

The Zope instance is now stopped again:

Installing the Zope server

```
$ $HOME/schedulixweb/bin/zopectl stop
```

5. Install the schedulix GUI components

The Zope installation has to be extended with several modules before the schedulix GUI components can be installed.

```
$ cd $HOME/schedulixweb
$ mkdir Extensions
$ cd Extensions
$ ln -s $HOME/schedulix/zope/*.py .
$ cd ../Products
$ ln -s $HOME/schedulix/zope/BICsuiteSubmitMemory .
$ cd ../import
$ ln -s $HOME/schedulix/zope/SDMS.zexp .
```

The Zope instance now has to be started again to register the changes on the Zope side.

```
$ $HOME/schedulixweb/bin/zopectl start
```

The Zope Management user interface is now opened at the address

```
http://localhost:8080/manage
```

in a browser (see also Figure 3.2). This is done with the user `sdmsadm` together with the password you have assigned.

The front end software is now loaded into Zope (Import button, see Figure 3.3):

- a) Import into the folder / `SDMS.zexp`.
- b) In the folder /`SDMS/Install`, mark and copy the folders `User` and `Custom`.
- c) Create the folders `User` and `Custom` in the folder / by pasting them.

If everything has been carried out without any errors, the interface will look like the screenshot in Figure 3.4.

6. Configure the server connections

The server connections are also configured in the Zope Management user interface. To do this, log on as the user `sdmsadm`.

The `SDMSServers` Python script is edited in the folder `Custom`. This script delivers a dictionary which has to contain an entry for every schedulix `Server` that is to be addressed by this schedulix!Web installation. The entry looks like this:

Installing the Zope server

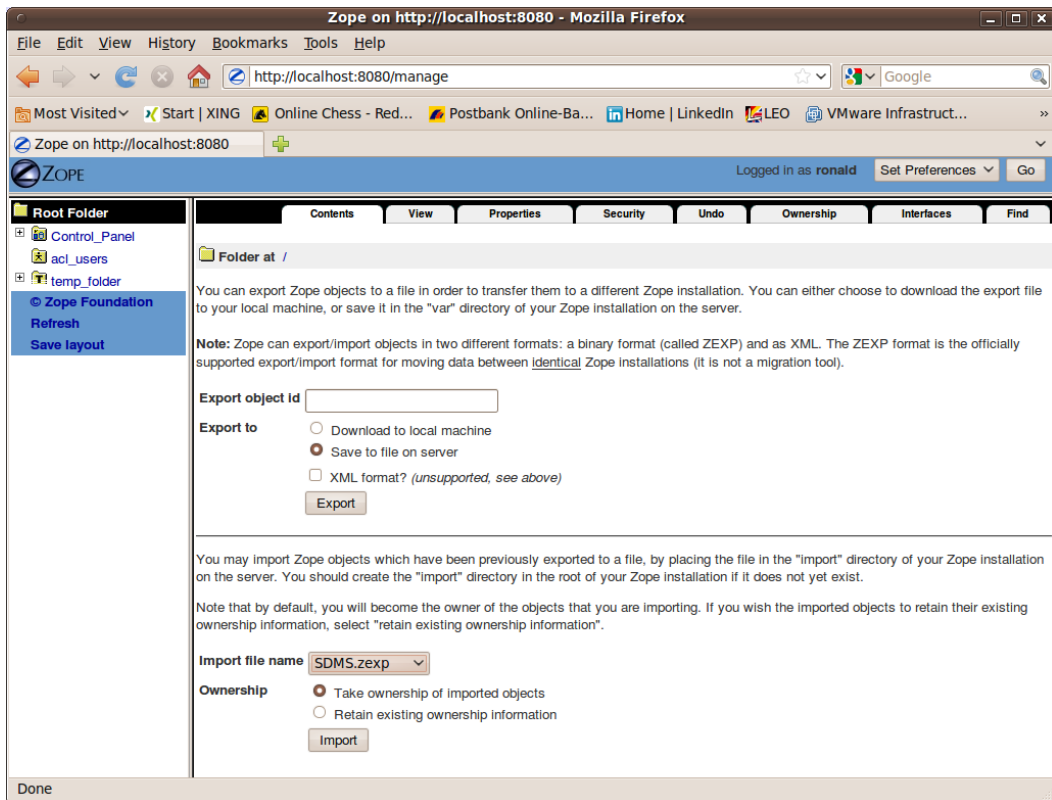


Figure 3.3: Zope Import dialogue

```
# Server name that identifies the server in the schedulix
# user interface
'servername' : {
    # IP address or hostname under which the schedulix Server is running
    'HOST'      : 'hostname',

    # Port at which the schedulix Server is addressed
    'PORT'      : '2506',

    # BASIC, PROFESSIONAL, ENTERPRISE
    'VERSION'   : 'BASIC',

    # Optional property stating whether the schedulix GUI should
    # cache the server connections
    'CACHE'     : 'Y'

    # Optional property stating for how long cached schedulix GUI
    # server connections should continue to be valid
    # Default setting is 60 seconds, only significant if 'CACHE' : 'Y'
    'TIMEOUT'   : '60'
```

Installing the Zope server

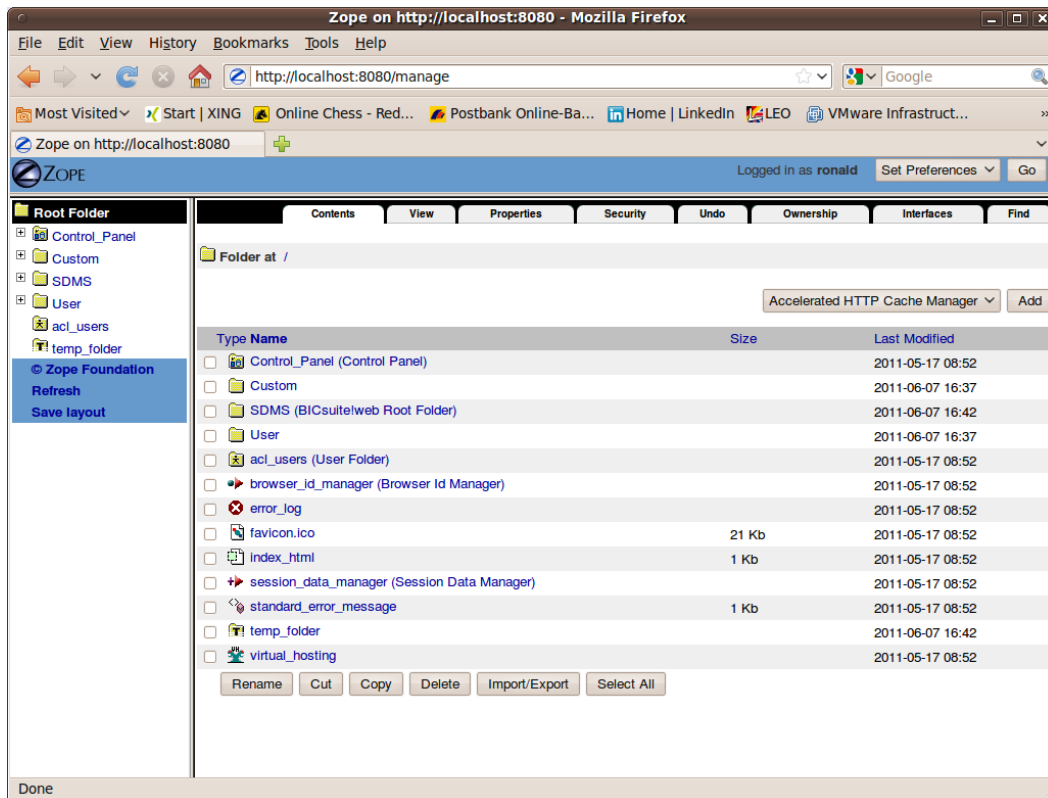


Figure 3.4: Zope result window

}

An entry with the name `DEFAULT` must exist for bootstrapping. This entry can be deleted after the user has been set up (who obviously should not then use this connection).

7. Open the schedulix interface

The user interface is now available at the address

`http://localhost:8080/SDMS`

A logon prompt is displayed when this page is opened. When the user has logged on, the application is started by clicking the "Take Off" button.

How to work with the interface is described in the relevant documentation.